

UNLOCK NEW POSSIBILITIES

tNavigator 24.4

tNavigator

Rock Flow Dynamics

ONE ASSET, ONE SOFTWARE

tNavigator 24.4 is now available, and we are pleased to share a selection of our experts highlights of this release!

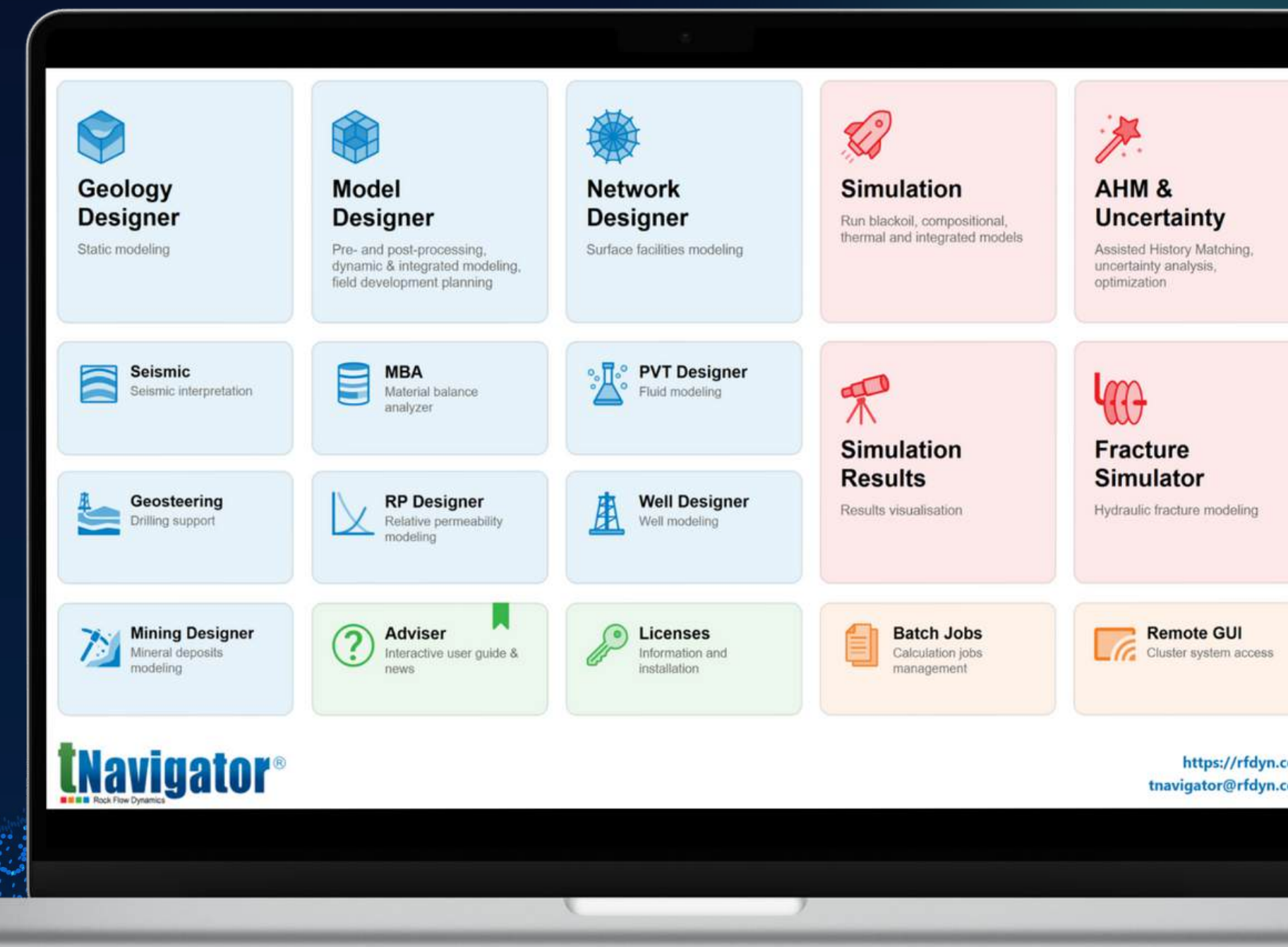
If you already have a license, upgrade to the new version now and see the extensive list of updates by logging into our client centre: support.rfdyn.com.

No update is required to your license file or login.

Give our new version a try and send your queries, comments and feedback to tNavigator@rfdyn.com.

If you don't have a license, we'd love to hear from you and arrange a demo! Get in touch with us today - asktNav@rfdyn.com

CLIENT CENTRE >



UNLOCK NEW POSSIBILITIES

tNavigator 24.4

tNavigator

Rock Flow Dynamics

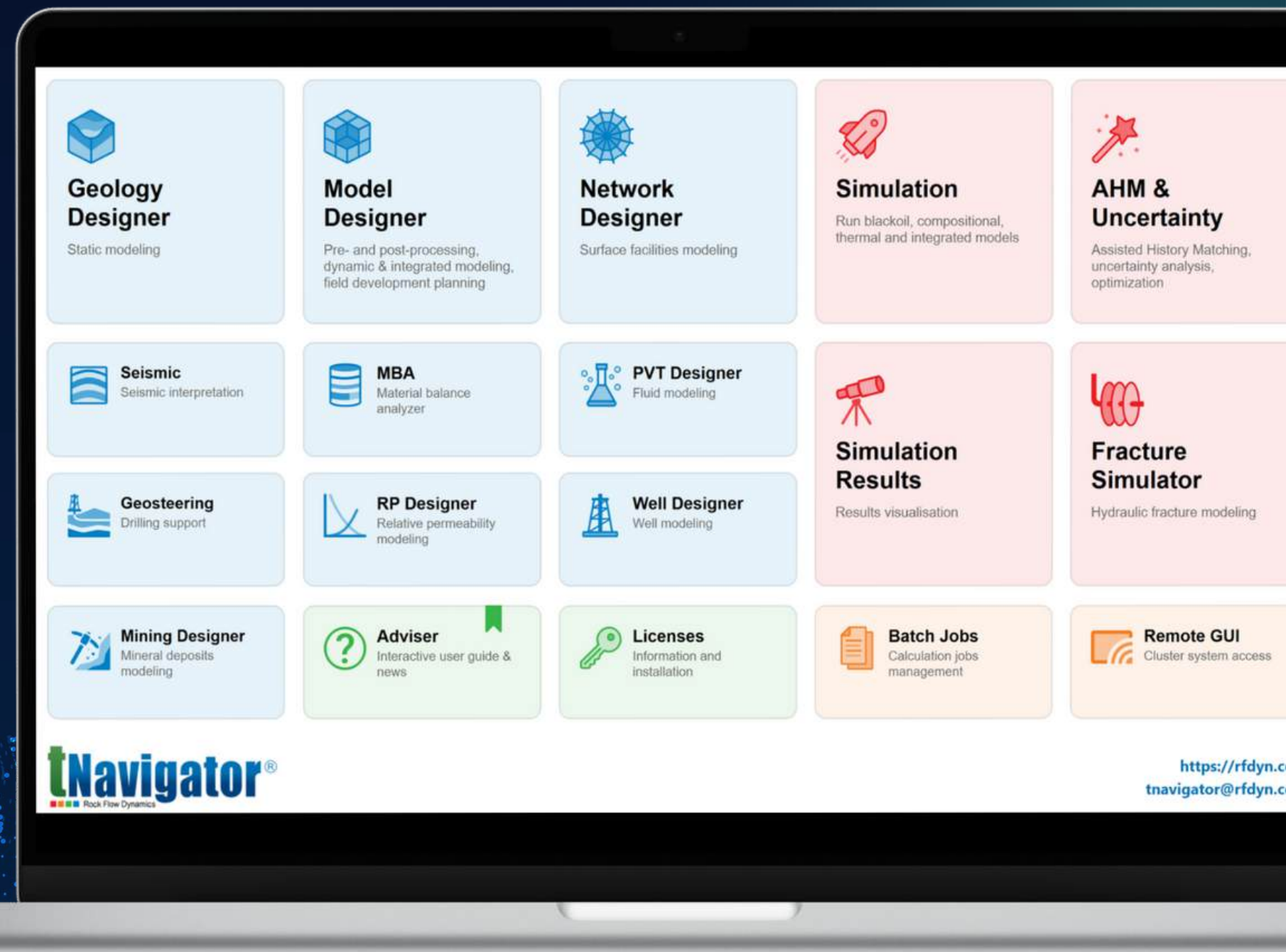
tNavigator 24.4 is now available, and we are pleased to share a selection of our experts highlights of this release!

Our technology continues to grow in the industry and we would be pleased to discuss how we can streamline and improve your existing workflows, from seismic to simulation and beyond.

If you want to hear why everyone is talking about tNavigator, get in touch with us today for a free demo: asktNav@rfdyn.com.

ONE ASSET, ONE SOFTWARE

GET IN TOUCH >



 **GEOPHYSICS**

 **GEOLOGY**

 **DYNAMIC MODELLING & SIMULATION**

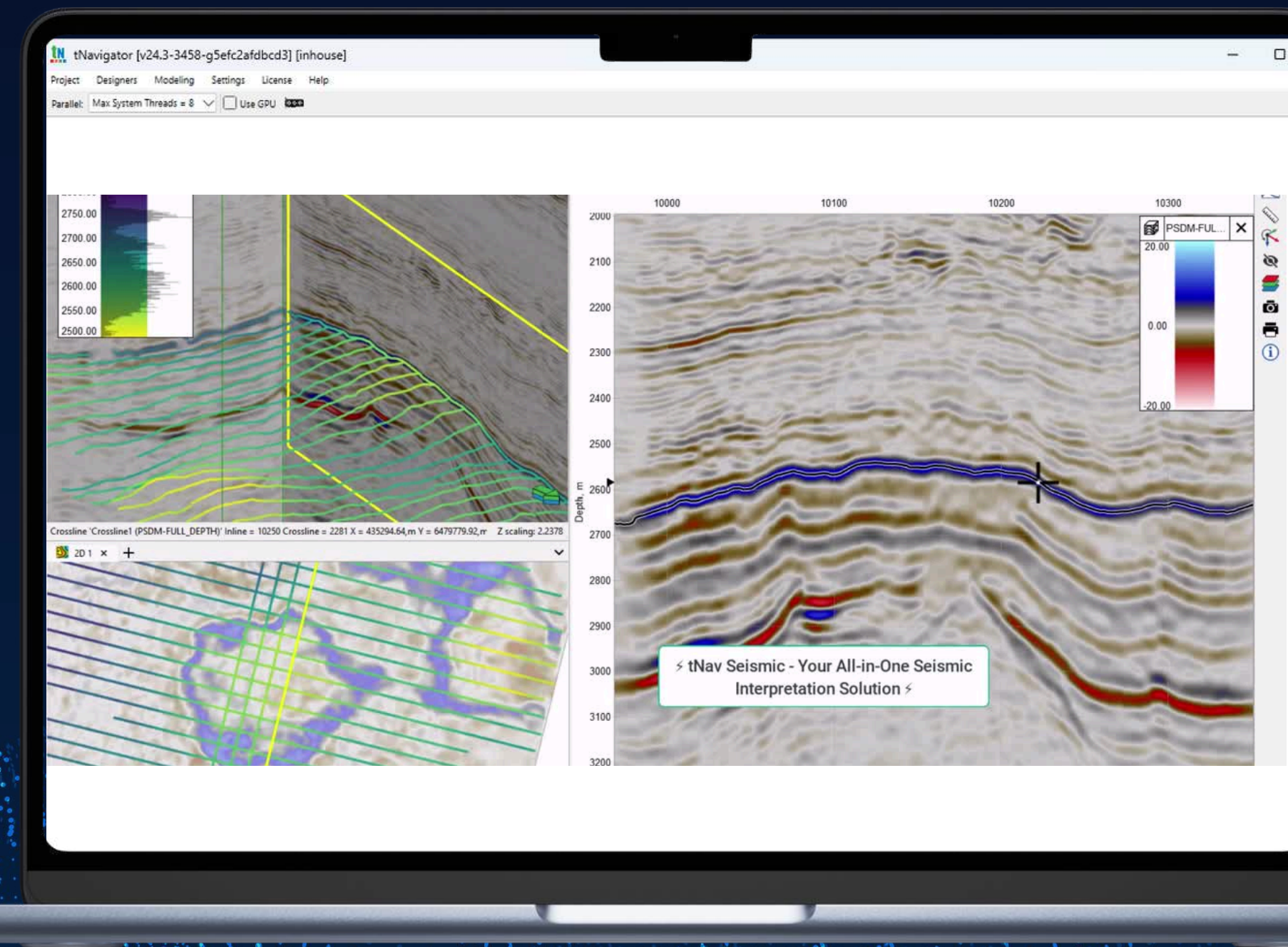
 **INTEGRATED PRODUCTION MODELLING**

 **AHM & OPTIMISATION**

ELIAS ORTIZ SENIOR GEOPHYSICIST  

“Our commitment to listening to client needs continues to drive innovation. With each release, our Seismic Module strengthens its foundations – making workflows smoother and more efficient. Now, introducing the Seismic Sections Player where you can seamlessly navigate your data and enhance QC with controlled, precise timesteps. The Seismic Module keeps evolving – helping you work smarter, with less effort, and achieve results faster!”

tNavigator
Rock Flow Dynamics



 GEOPHYSICS

 GEOLOGY

 DYNAMIC MODELLING & SIMULATION

 INTEGRATED PRODUCTION MODELLING

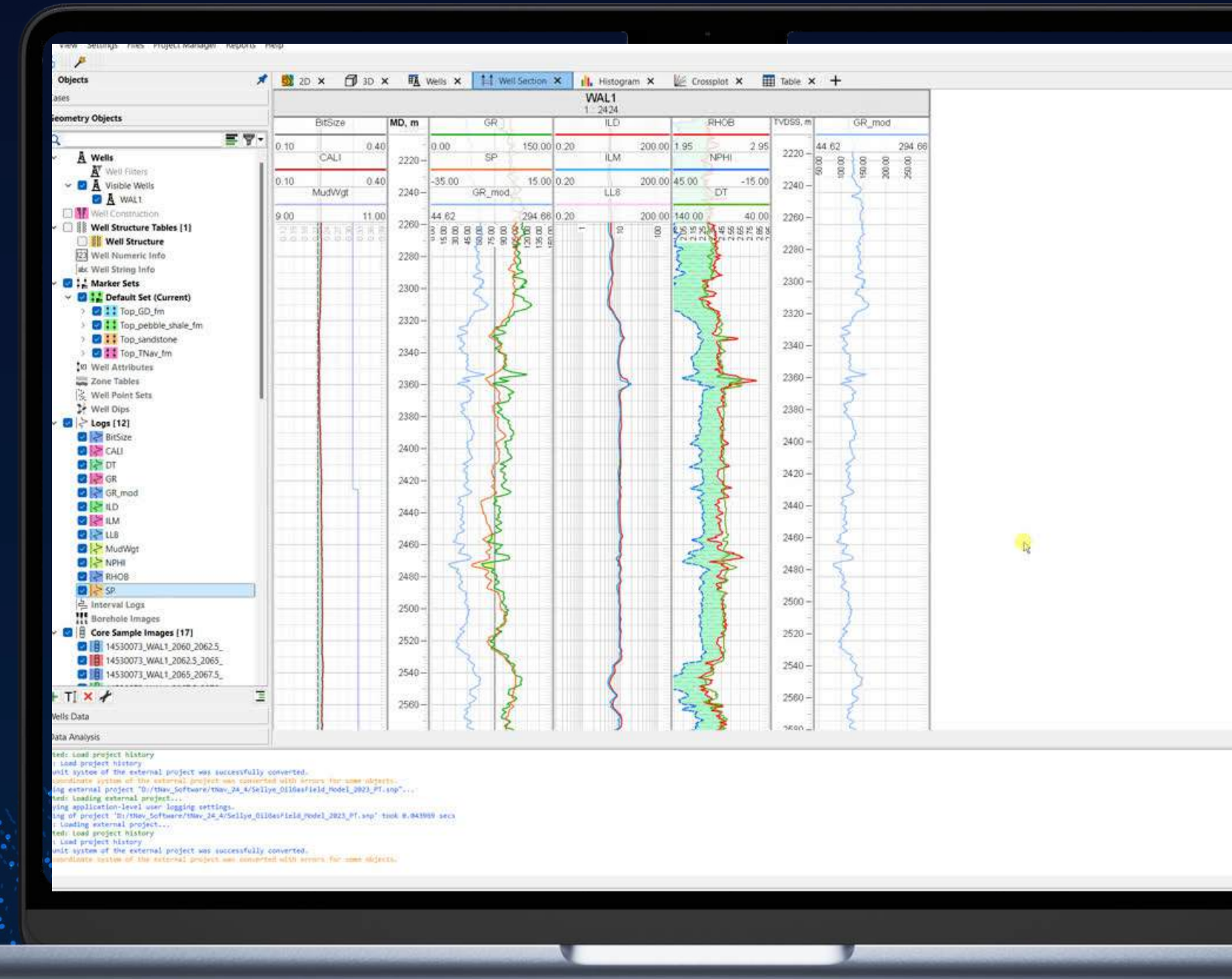
 AHM & OPTIMISATION

tNavigator

Rock Flow Dynamics

PETER TOTH SENIOR GEOLOGIST  

“We introduce several useful features for visualising and handling log curve data in the well section window. Drag & drop log curves into new or existing tracks for easy, interactive visualisation. Eliminate the need to recreate object settings for log curves with handy copy & paste function. The ghost curve tool supports vertical flipping and lateral mirroring, making it more flexible for log correlations. Additionally, numerical log data can be displayed in table format directly from well sections and may easily be copied to an external spreadsheet, streamlining data transfer.”



 GEOPHYSICS

 GEOLOGY

 DYNAMIC MODELLING & SIMULATION

 INTEGRATED PRODUCTION MODELLING

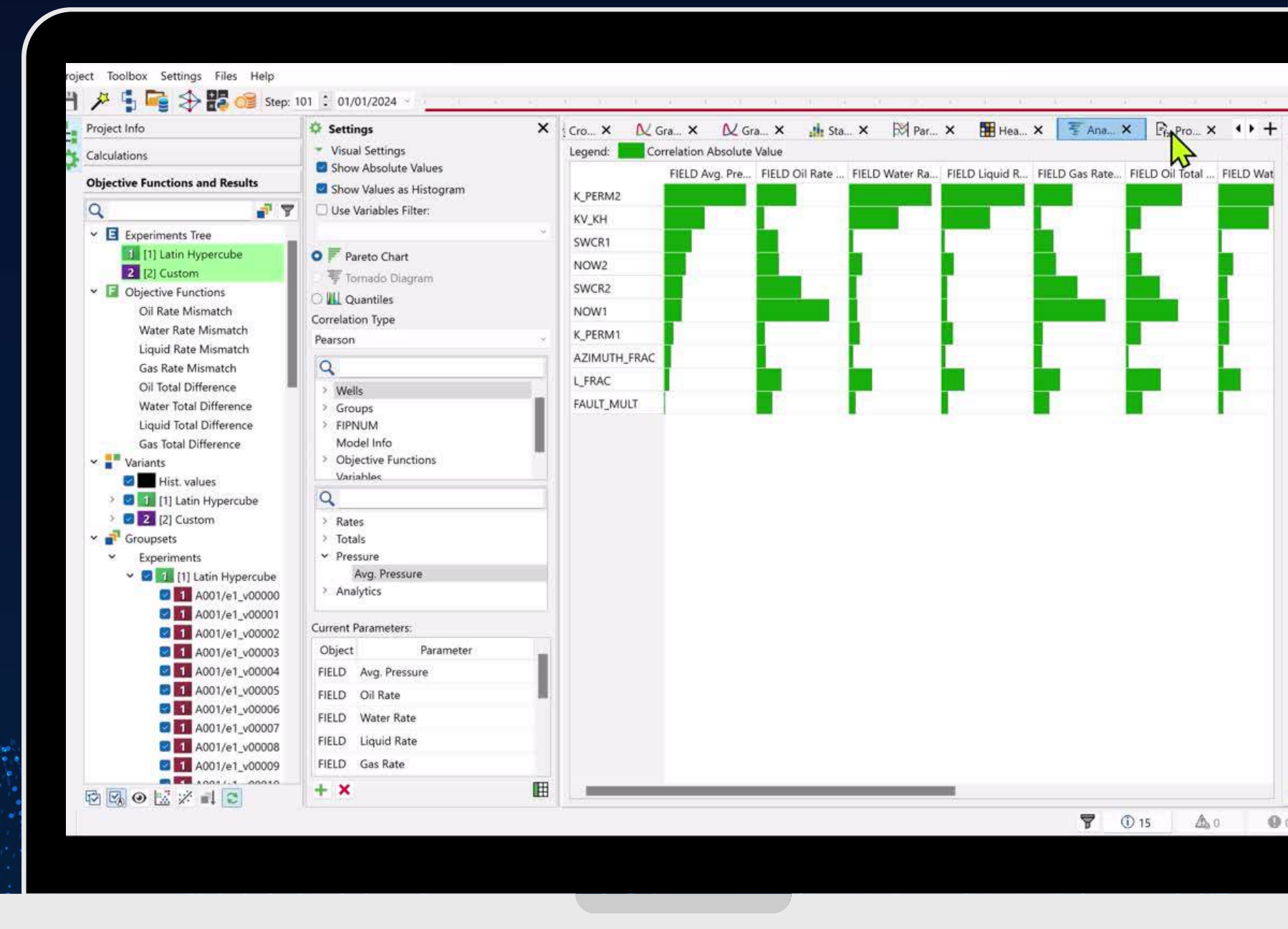
 AHM & OPTIMISATION

tNavigator
Rock Flow Dynamics

SORIN SIRBU RESERVOIR ENGINEER



“Incorporating historical data as a target in Proxy model optimisation offers a more refined approach to calibrating models. This process follows a clear three-step framework: Proxy Models, Optimisation, and the integration of the novel functionality of Use Historical Values as a Target. By minimising the discrepancies between the model’s outputs and historical data, this method ensures improved accuracy, more informed decision-making, and streamlined calibration, ultimately enhancing client satisfaction.”



 GEOPHYSICS

 GEOLOGY

 DYNAMIC MODELLING & SIMULATION

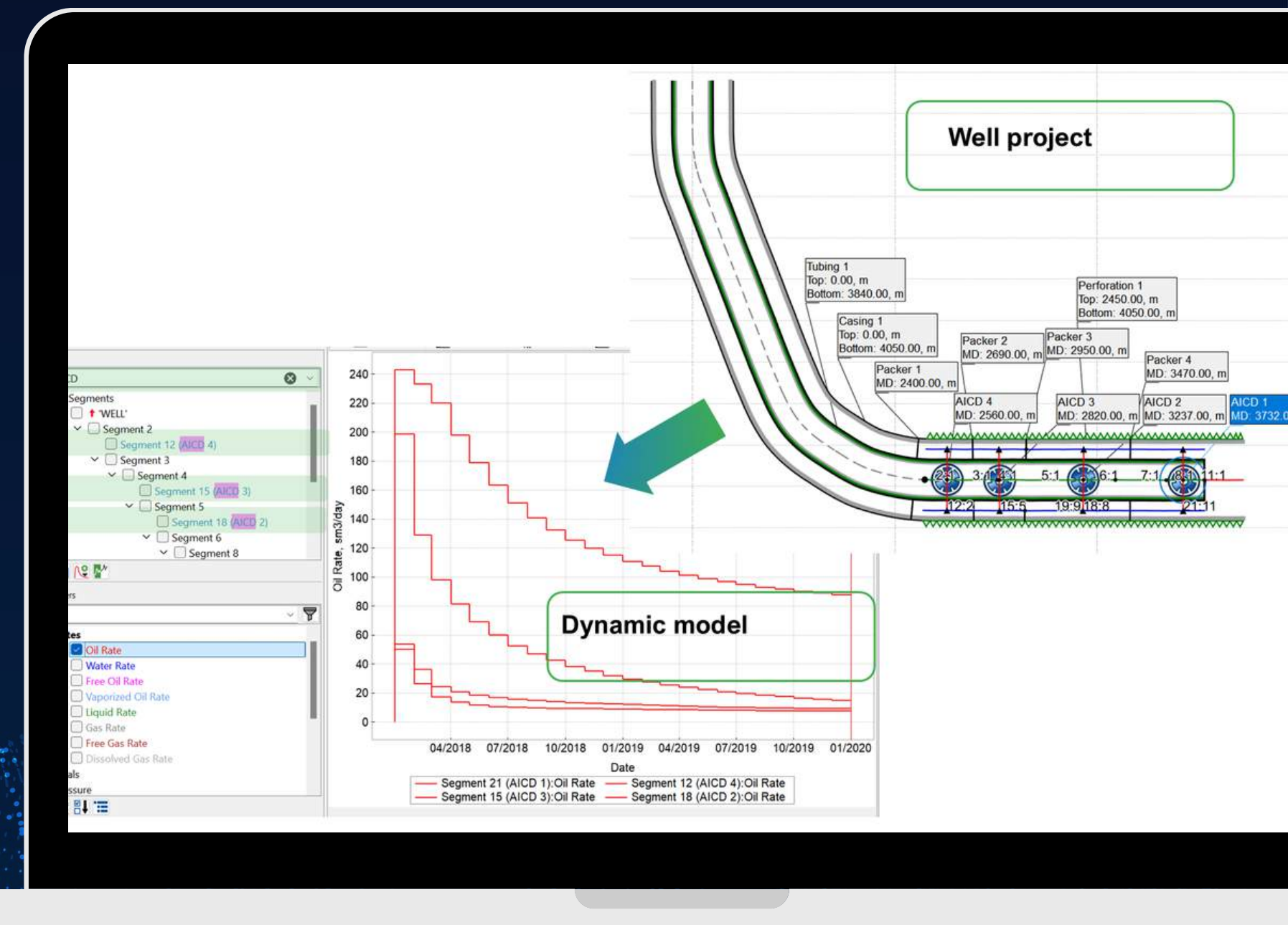
 INTEGRATED PRODUCTION MODELLING

 AHM & OPTIMISATION

tNavigator
Rock Flow Dynamics

OKSANA LETICHEVSKAIA RESERVOIR ENGINEER  

“While developing our multisegmented solver to be even faster, we’ve been equally focused on enhancing the user experience. In our integrated modelling platform, once you’ve set up a well construction with segmented wells and inflow control devices (ICDs), visualisation becomes a breeze. You can now easily visualise parameters on well segments. Even better, the device name is displayed next to the segment number where it’s located. This makes finding the right segment for analysis faster and more intuitive than ever before.”





GEOPHYSICS



GEOLOGY



DYNAMIC MODELLING & SIMULATION



INTEGRATED PRODUCTION MODELLING



AHM & OPTIMISATION

tNavigator

Rock Flow Dynamics

JAMES MULLINS SENIOR GEOSCIENTIST  

“On the fly creation of LGRs around faults improves reservoir model accuracy through more robustly capturing the detail around the fault zone and its respective impact on fluid flow, pressure distribution, and reservoir dynamics. Targeted refinement optimises simulation efficiency by refining only where necessary; ultimately leading to more realistic, reliable and efficient reservoir matching and forecasts.”

