

UNLOCK NEW POSSIBILITIES

# tNavigator 24.3



ONE ASSET, ONE SOFTWARE

**tNavigator 24.3 is now available, and we are pleased to share a selection of our experts highlights of this release!**

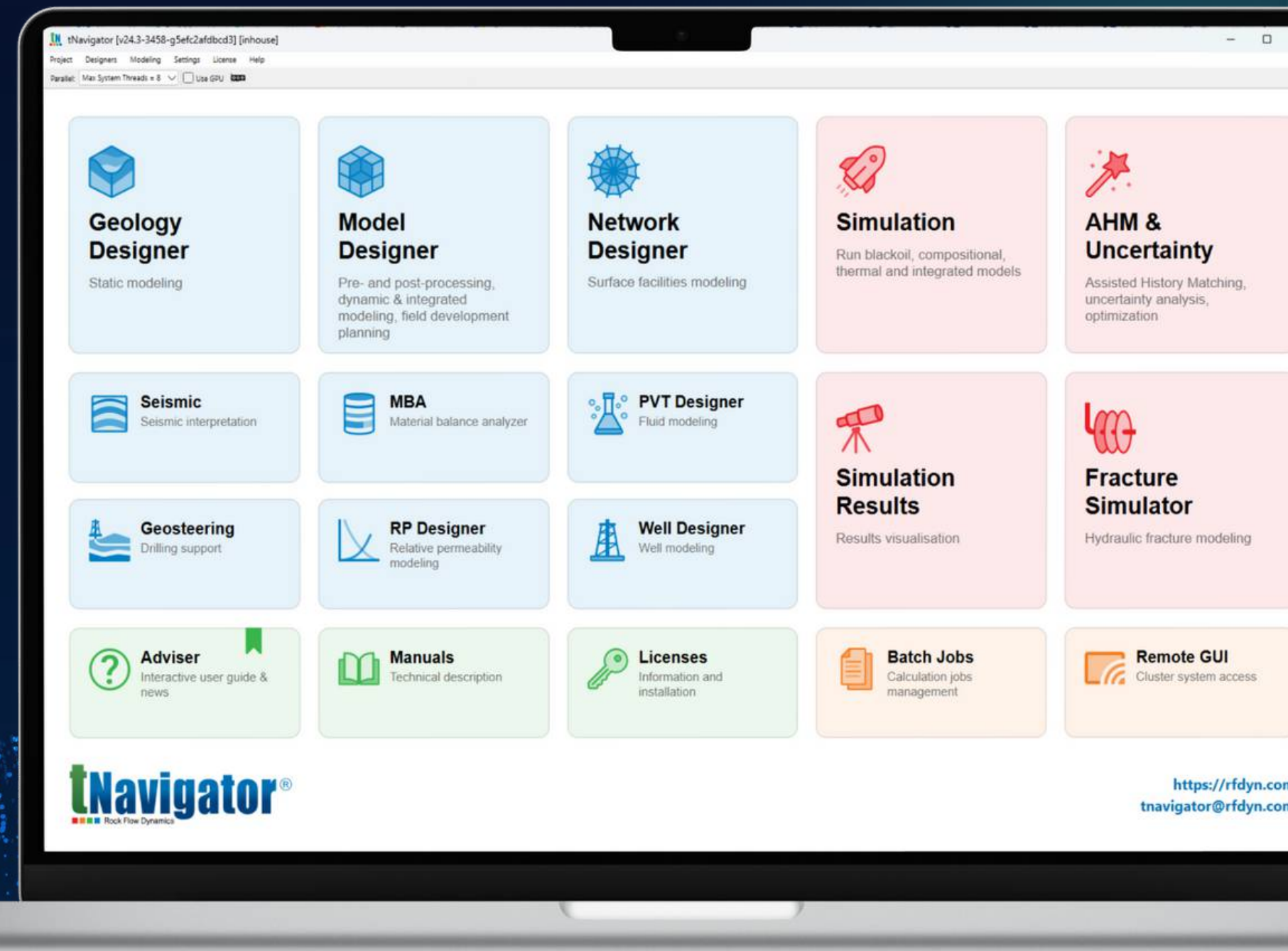
If you already have a license, upgrade to the new version now and see the extensive list of updates by logging into our client centre: **support.rfdyn.com**.

*No update is required to your license file or login.*

Give our new version a try and send your queries, comments and feedback to **tNavigator@rfdyn.com**.

If you don't have a license, we'd love to hear from you and arrange a demo! Get in touch with us today - **asktNav@rfdyn.com**

CLIENT CENTRE >



 **GEOPHYSICS**

 **GEOLOGY**

 **DYNAMIC MODELLING & SIMULATION**

 **INTEGRATED PRODUCTION MODELLING**

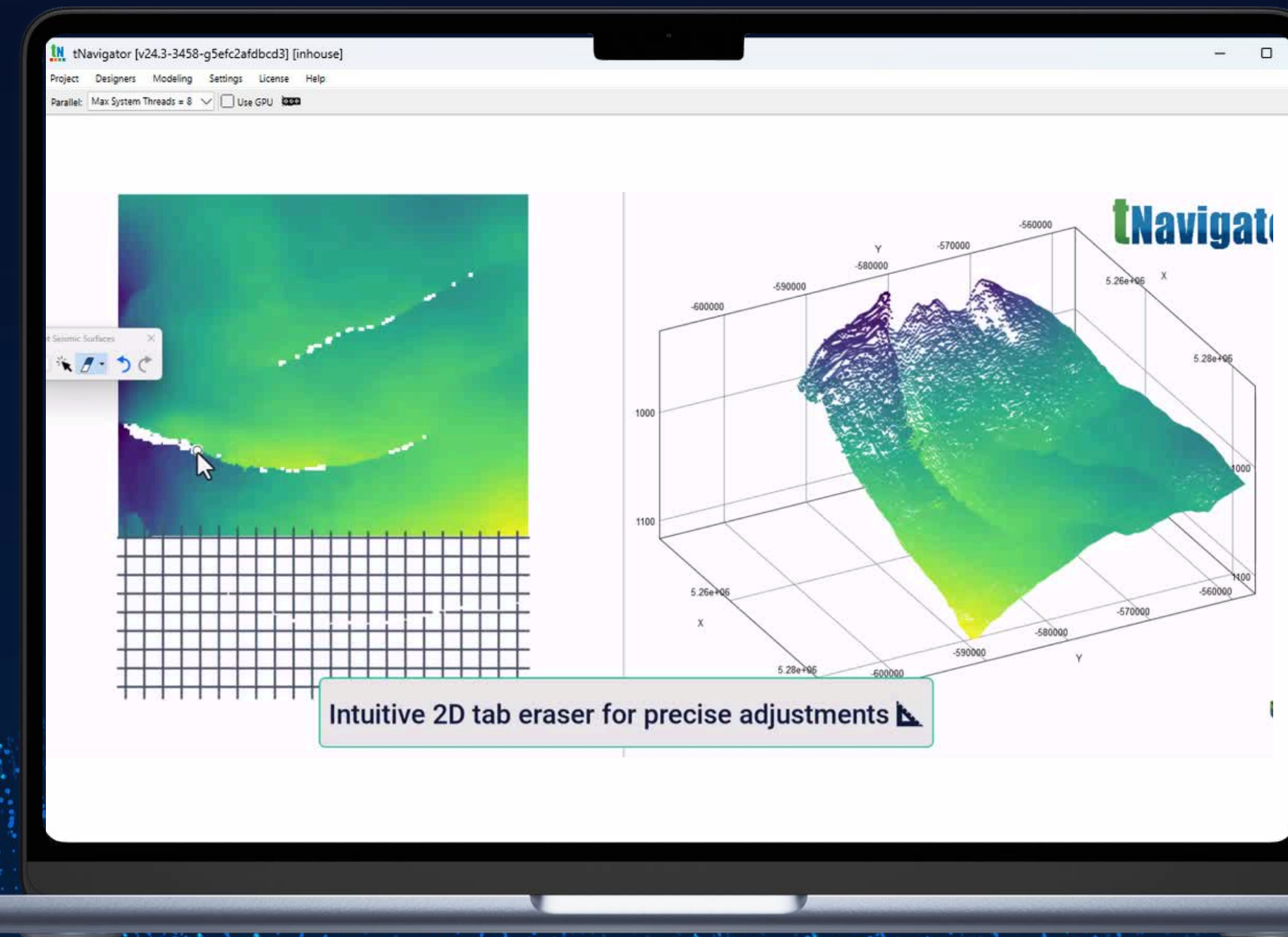
 **ASSISTED HISTORY MATCHING**

**ELIAS ORTIZ** SENIOR GEOPHYSICIST  

“Our commitment to listening to client needs continues to **drive innovation**. With each release, tNavigator’s **Seismic Interpretation** solution strengthens its foundation, making workflows smoother and more efficient. Recent highlights include seamless merging of seismic horizons, greater integration for accurate, continuous interpretations, enhanced horizon editing tools and optimised data management.

Our Seismic workspace keeps getting better and better!”

**tNavigator** 



 GEOPHYSICS

 GEOLOGY

 DYNAMIC MODELLING & SIMULATION

 INTEGRATED PRODUCTION MODELLING

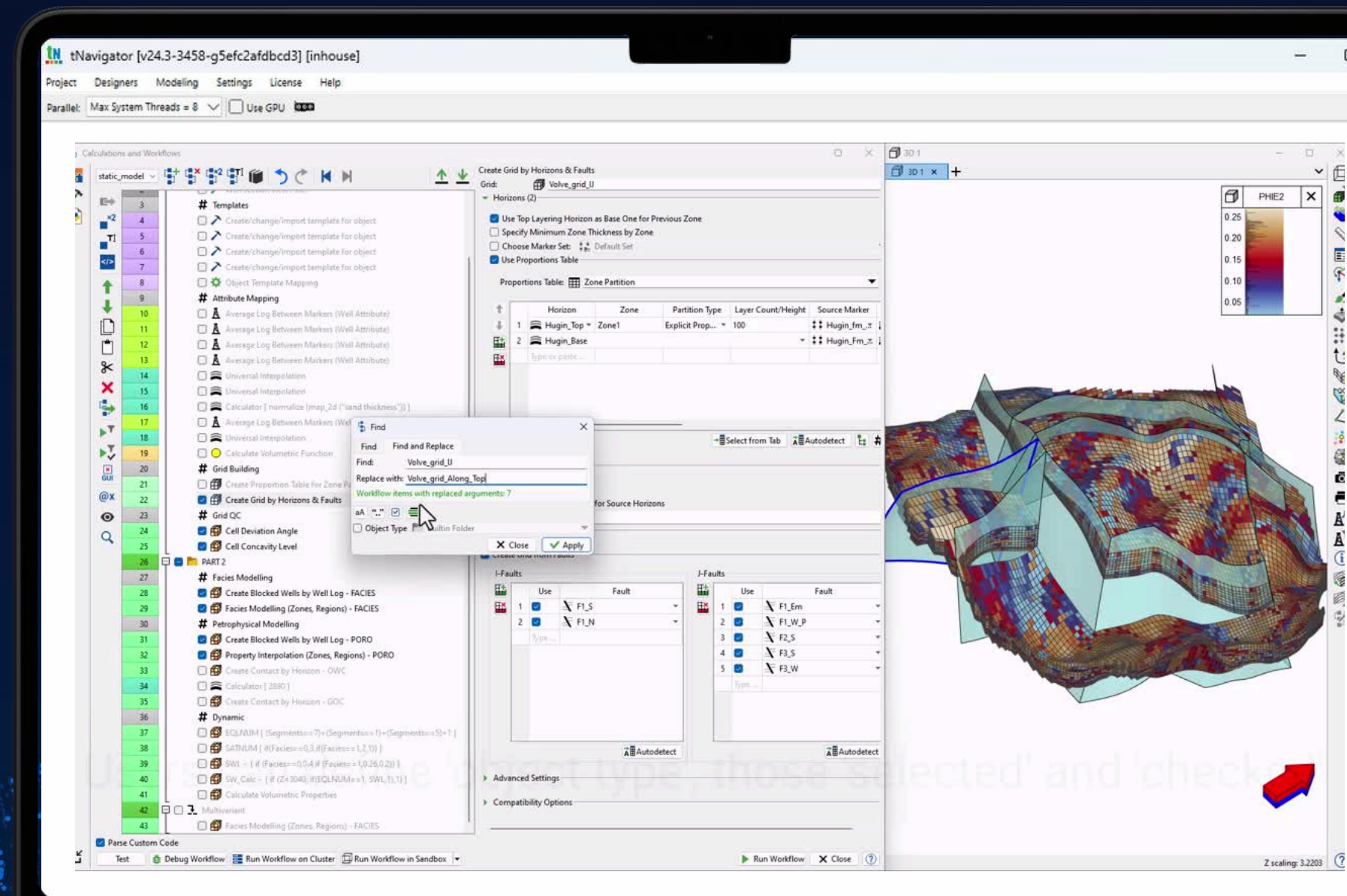
 ASSISTED HISTORY MATCHING

tNavigator 

JOHN LAING GEOSCIENTIST  

“We have enhanced our Workflow ‘Find and Replace’ tool in tNavigator 24.3.

Users can now search for parameters by object type, selected and checked workflow lines. This added flexibility allows users to bulk update parameters, and run new models on the fly, whilst minimising the chance of manual errors taking place. Project timelines are significantly reduced!”



 GEOPHYSICS

 GEOLOGY

 DYNAMIC MODELLING & SIMULATION

 INTEGRATED PRODUCTION MODELLING

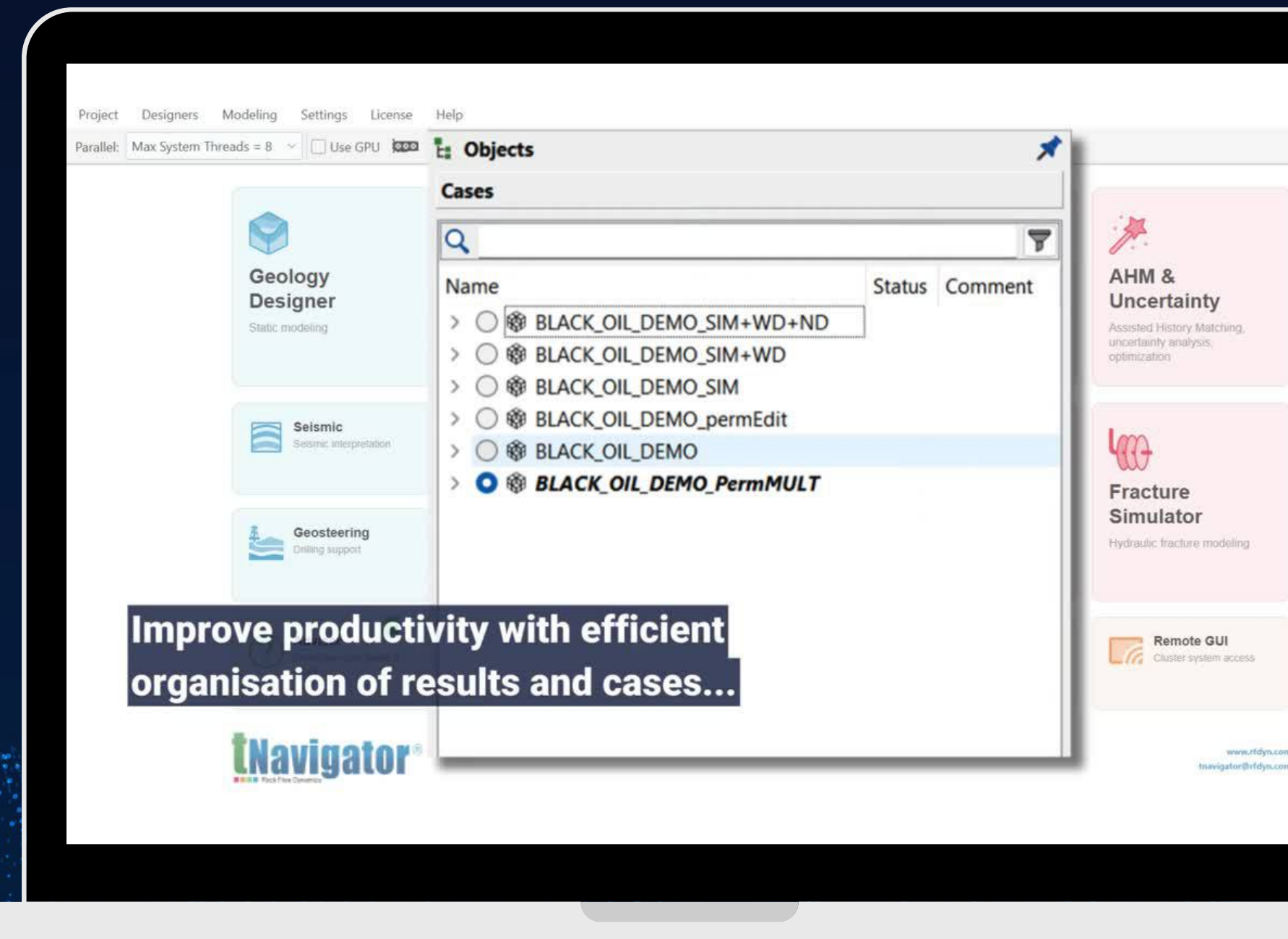
 ASSISTED HISTORY MATCHING

tNavigator 

OKSANA LETICHEVSKAIA RESERVOIR ENGINEER  

“I often receive models from clients with a **long list of cases and results**, sometimes leaving no space in the window. It can be quite challenging to navigate through them.

Now, we have this wonderful feature in tNavigator where you can organise cases into folders, and the **results are automatically grouped** by folders in the Geometry Objects tree! It's so efficient.”



 GEOPHYSICS

 GEOLOGY

 DYNAMIC MODELLING & SIMULATION

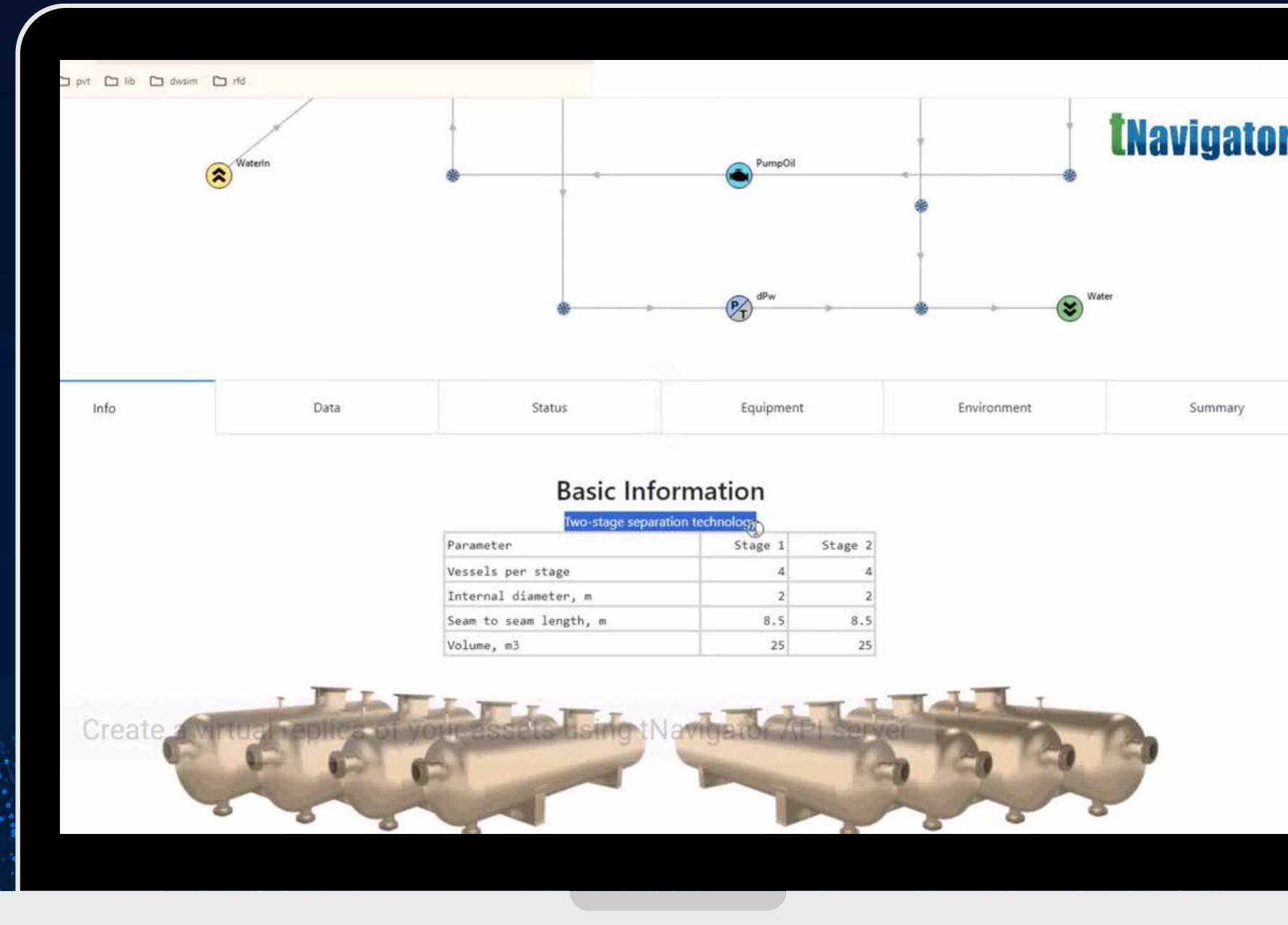
 **INTEGRATED PRODUCTION MODELLING**

 ASSISTED HISTORY MATCHING

**tNavigator** 

**SCOTT HARRISON** DIRECTOR 

"In an era where agility and innovation are paramount, **tNavigator's digital twin capability** stands out as a game changer. I've seen first-hand how this technology is revolutionising reservoir management. By integrating data from various sources, it provides a holistic view of field performance and empowers teams to simulate different scenarios and outcomes. This not only streamlines workflows but also reduces costs and environmental impact by optimising resource allocation."



The screenshot displays the tNavigator software interface. At the top, a process flow diagram shows a sequence of components: Waterin, PumpOil, dPw, and Water. Below the diagram is a navigation bar with tabs for Info, Data, Status, Equipment, Environment, and Summary. The 'Basic Information' section is active, showing a table for 'Two-stage separation technology'.

Parameter	Stage 1	Stage 2
Vessels per stage	4	4
Internal diameter, m	2	2
Seam to seam length, m	8.5	8.5
Volume, m3	25	25

Below the table, there is a 3D rendering of two cylindrical vessels. A text overlay reads: "Create virtual replicas of your assets using tNavigator API server".

 GEOPHYSICS

 GEOLOGY

 DYNAMIC MODELLING & SIMULATION

 INTEGRATED PRODUCTION MODELLING

 **ASSISTED HISTORY MATCHING**

**tNavigator** 

**SORIN SIRBU** RESERVOIR ENGINEER  

“Get ready to elevate your modelling experience! The latest release of the **Assisted History Matching** workspace introduces the **LSTM (long short-term memory) functionality**. This powerful addition allows for greater flexibility in tuning your neural network settings. Designed with your needs in mind, it can also efficiently optimise the parameters of a surface network as part of the integrated Network Designer and Model Designer project. Our intuitive ANN Proxy analysis feature helps you analyse results effortlessly, specifically designed to compare different AHM models.”

